

## Tick Resource Guide



[www.hamptonpestmanagement.com](http://www.hamptonpestmanagement.com)  
[service@hamptonpestmanagement.com](mailto:service@hamptonpestmanagement.com)

**East Hampton**  
631.324.1333

**Quogue**  
631.728.1708

**Mattituck**  
631.298.8341

## What Are ticks

Ticks are actually arachnids, not insects, and are more closely related to spiders. Ticks feed only on the blood of mammals, birds, and reptiles, attaching to their "hosts" for 2-3 weeks. While attached to "hosts", ticks can acquire bacteria, viruses, and protozoa which can be transferred to the next host.

The species of ticks most prevalent on the East End of Long Island include the Black Legged Tick, the Lone Star Tick, and the American Dog Tick. These species prefer wooded habitats and adjacent grasslands. They have lifecycles of 2+ years and are most active with temperatures above 40 degrees, but ticks can also be active in winter. Importantly, tick bites rarely hurt which makes properly checking your body and protecting your property essential.



## How Ticks Make You Sick

Ticks transmit disease through their saliva. When attaching to a host, the saliva secreted carries a diverse molecular composition which enables the tick to bite, attach, and transmit fluids to the host largely unnoticed. Any individual tick can carry multiple infections and therefore a single bite can result in multiple infections to the host. Importantly, in most instances, a host has at least 24 hours to remove a tick before it delivers an infection.

Prevention and early detection are essential to protecting against tick-borne illness. Make sure to keep your family safe by thoroughly checking your body for ticks on a daily basis after time outdoors.



# How Can Hampton Pest Management Help

Hampton Pest Management performs **full property sprays to control for ticks.** We recommend **monthly applications** from early Spring thru Early Winter for the most effective protection against ticks on your property. The monthly applications target ticks at various stages of their life cycle throughout the season and also protect against new ticks transported onto your property by wildlife. Spray application are effective for approximately 4 weeks.

## **Spring (April)**

- Applications early in the season are essential for proper tick control as they lay the foundation for a tick-free summer season. This application targets emerging adult ticks and the eggs laid on your property.

## **Early Summer (May, June)**

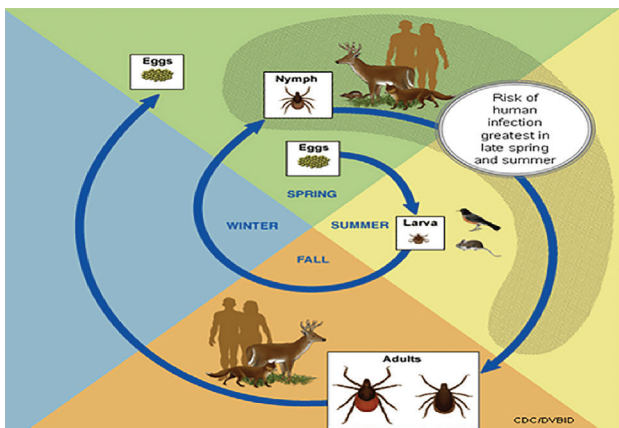
- Early Summer applications target nymph and adult ticks as they continue to emerge with the warmer weather. Ticks are highly active by this time in the season and are on a quest for blood meals. These are high-risk months for tick-borne diseases.

## **Late Summer (July, August, September)**

- Sprays in late summer target both ticks hatching and nymphs and adults they may have been transferred onto your property by carriers (ex., whitetail deer, mice, rabbits, birds, etc.). Late Summer remains a high-risk season for tick bites and tick-borne diseases.

## **Fall (October, November)**

- Applications in the fall offer protection against aggressive ticks looking for a last blood meal before the winter. These sprays also help reduce tick populations on your property for the following year. These sprays are highly recommended.



*Hampton Pest Management also performs sprays for parties and other special occasions to provide additional protection when enjoying the outdoors.*

# “10 Things To Know About Ticks”

- 1. Ticks crawl up!**
  - Ticks do not fall from trees
  - They climb onto you from high grasses and low shrubs
- 2. All Ticks come in small / medium / large sizes**
  - Larvae / Nymph / Adult
  - Small does not equal deer tick
  - Large does not equal dog tick
  - Use a Tick ID card to properly identify your ticks
- 3. Ticks are active even in the winter**
- 4. Ticks carry disease causing microbes**
- 5. Only black legged (deer) tick transmit Lyme Disease**
  - The other ticks carry other diseases (some far more serious, but less prevalent, than Lyme)
- 6. In most cases, you have at least 24 hours to find and remove a tick before it delivers an infection**
- 7. Deer Tick nymphs look like poppy seeds on the skin**
  - They are SMALL; inspect careful
- 8. The easiest way to remove a tick is with a pointed tweezers**
  - Do not use Vaseline
  - Do not burn off
  - Remove entire body with tweezers by grabbing as close to skin as possible
- 9. Clothing with built-in tick repellent is effective at preventing tick bites**
- 10. Tick-borne disease IS preventable**
  - Get Tick Smart
  - Treat high usage areas of your property that are conducive to tick populations with regular spray applications



\* **Dr. Thomas Mather** aka “The Tick Guy”  
[www.tickencounter.com](http://www.tickencounter.com)



# Types of Ticks on Long Island

## Black Legged (Deer) Tick

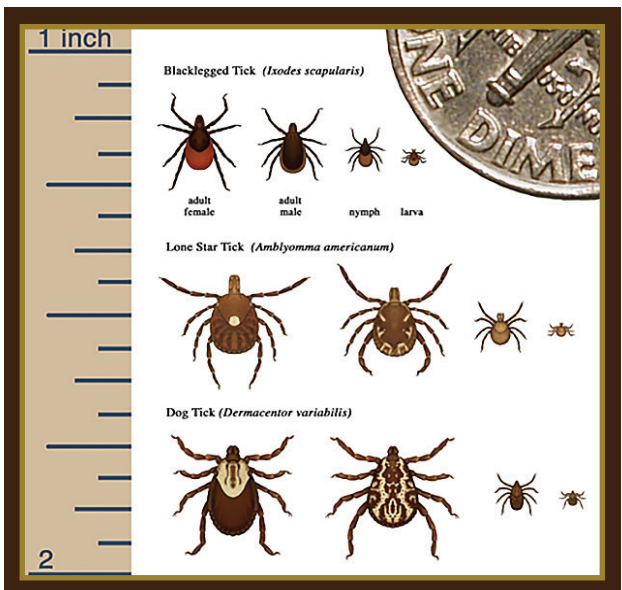
- Widely found throughout the Northeastern United States
- Transmits: Lyme disease, babesiosis, anaplasmosis, and Powassan disease
- Risk Factors: The greatest risk of being bitten by a deer tick exists in spring, summer, and fall. However, adults may be out searching for hosts any time temperatures are above freezing. Nymphs and adult females are the most likely to bite humans.

## Lone Star Tick

- Widely found through the Northeastern United States
- Transmits: Ehrlichiosis, tularemia, "alpha-gal" allergy, and STARI
- Risk Factors: The lone star tick is a very aggressive tick that bites humans. Adult females (distinguished by a white dot on her back) and nymphs are the most likely to bite humans. Lone star tick saliva can be irritating and be accompanied by redness and discomfort at the bite site.

## American Dog Tick

- Widely found throughout the Northeastern United States
- Transmits: Rocky Mountain spotted fever and tularemia
- Risk Factors: The highest risk of being bit by Dog Ticks is in the spring and summer with adult females the most aggressive.



# Why Hampton Pest Management?

## **MISSION:**

Hampton Pest Management, Inc. strives to provide pest control services to the East End of Long Island with the highest levels of integrity, customer service and safety.

## **VALUES:**

### **Safety**

The safety of our employees, customers, and the environment are always our first priority. As certified pesticide applicators, we take this responsibility seriously.

### **Integrity**

We operate with honesty and integrity at all times, in all situations PERIOD. We apply the Rotary International "Four-way Test" to everything we say and do: 1) Is it the Truth, 2) Is it Fair to all concerned, 3) Will it build goodwill and better friendships/relationships, and 4) Will it be beneficial to all involved.

### **Professionalism**

You can expect the highest level of professionalism from all Hampton Pest Management employees at all times. Whether you're a customer, supplier, competitor, or neighbor, Hampton Pest Management employees will always be respectful, well-mannered and timely. We pride ourselves on providing results-driven, exceptional service to our customers.

### **Knowledge**

We strive to be on the forefront of new technologies, techniques, and products that will enable us to deliver our services in a more efficient manner. The more we know about pests, the more effective and successful we'll be at managing your pest-related problems.

### **Give Back**

We are fortunate to live and work in wonderful communities on the East End of Long Island. We support those communities in a variety of ways both as a company and as individuals.

## **Additional Resources**

<http://www.tickencounter.org/>

<http://www.southamptonhospital.org/services/tick-borne-disease-resource-center/default.aspx>

<http://www.cdc.gov/lyme/>

---

*\*\*Licensed and Insured*

*\*\*Offering Organic alternatives to harsh pesticides*